



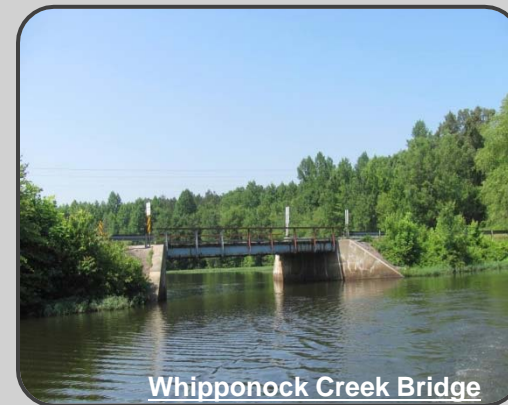
APPOMATTOX RIVER WATER AUTHORITY

RESERVOIR BRIDGE ANALYSIS

BOARD PRESENTATION



Namozine Creek Bridge



Whipponock Creek Bridge

September 25, 2014

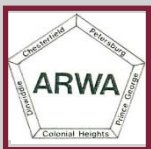
3040 Avemore Square Place
Charlottesville, VA 22911
Phone: 434-984-2700
Fax: 434-978-1444

www.wwassociates.net

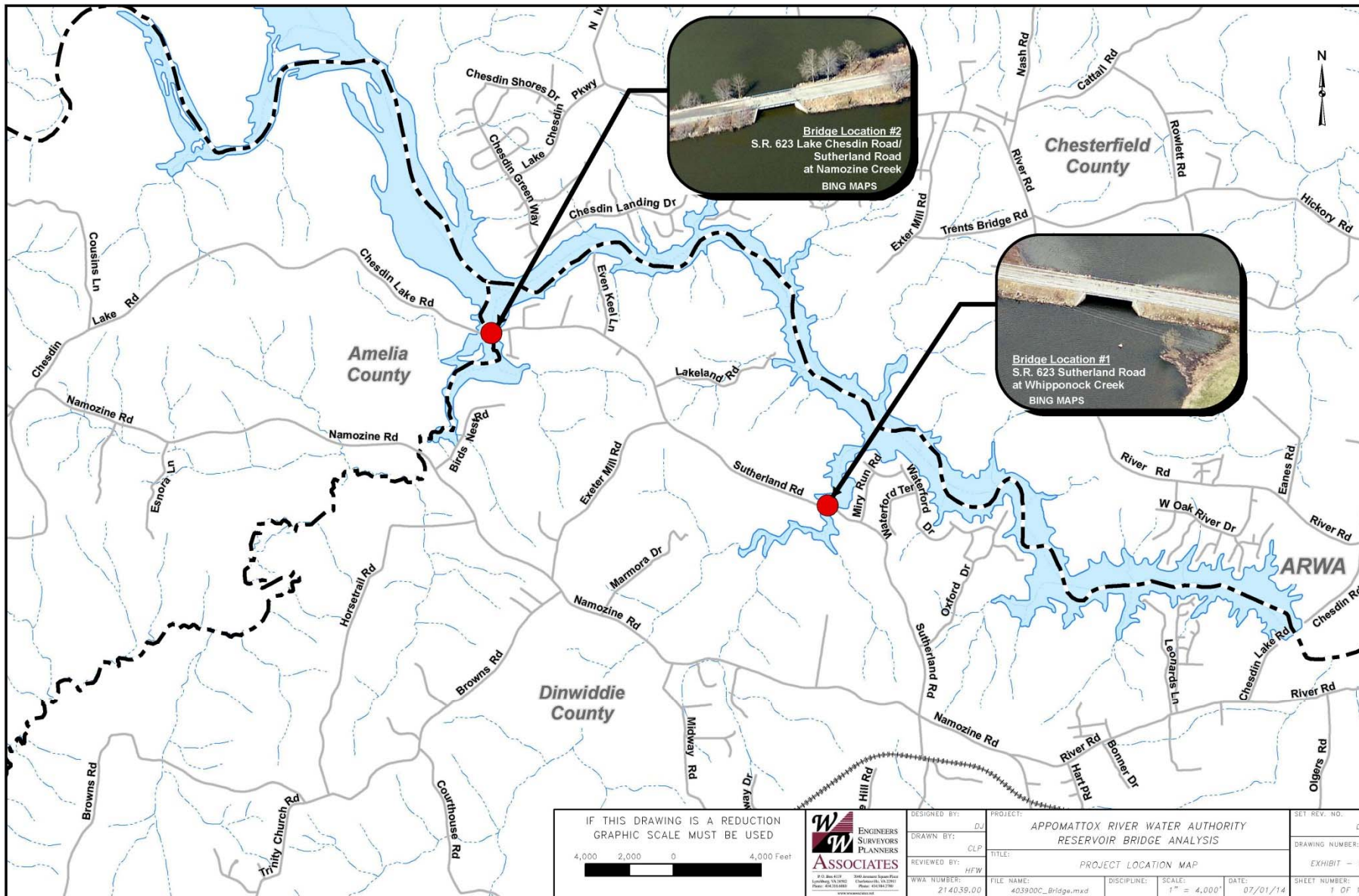
P.O. Box 4119
Lynchburg, VA 24502
Phone: 434-316-6080
Fax: 434-316-6081

OVERVIEW

- **Raising Brasfield Dam 18”**
- **Affects Whipponock Creek Bridge and Namozine Creek Bridge on State Route 623 (Sutherland Road)**
- **Raise bridges and approach to allow for continual watercraft navigation when water level is raised 18”**



LOCATION MAP



<p>IF THIS DRAWING IS A REDUCTION GRAPHIC SCALE MUST BE USED</p> <p>4,000 2,000 0 4,000 Feet</p>	<p>W ASSOCIATES ENGINEERS SURVEYORS PLANNERS</p> <p>P.O. Box 4128 3400 American Legion Drive Lynchburg, VA 24002 Charlottesville, VA 22902 Phone: 434.733.0000 Fax: 434.733.7200 www.wassociates.com</p>	DESIGNED BY: DJ	PROJECT: APPOMATTOX RIVER WATER AUTHORITY RESERVOIR BRIDGE ANALYSIS	SET REV. NO.: 0
		DRAWN BY: CLP	TITLE: PROJECT LOCATION MAP	DRAWING NUMBER:
		REVIEWED BY: HFW	FILE NAME: 403900C_Bridge.mxd	DISCIPLINE: SCALE: 1" = 4,000'
		WVA NUMBER: 214039.00	DATE: 07/01/14	SHEET NUMBER: 1 OF 1

BRIDGE CONDITIONS

WHIPPONOCK CREEK & NAMOZINE CREEK BRIDGES:

- **VDOT Ownership**
- **Bridges are of similar design – single span, concrete abutments, steel girders, and wood decking overlaid by asphalt**
- **Bridges are part of the VDOT National Bridge Inspection System (NBIS)**
 - **VDOT indicates no work has been funded for these bridges in the current 6-year program**
 - **If it could be funded, it would be preventive maintenance type activities to prevent structural deficiencies**



BRIDGE CONDITIONS

WHIPPONOCK CREEK & NAMOZINE CREEK BRIDGES:

- **Bridge conditions based on site inspection, include –**
 - **Wood decking with asphalt overlay – Wood is in fair to poor condition**
 - **Steel girders are rusting in need of paint**
 - **Concrete abutments are cracking**
 - **Bridges can be characterized as in poor condition**



BRIDGE CONDITIONS

WHIPPONOCK CREEK & NAMOZINE CREEK BRIDGES:

- VDOT indicates a Sufficiency Index Rating of 5 out of 10
- Not slated for replacement

Estimated Project Cost

Bridge	Cost
Whipponock Creek Bridge	\$3,060,000
Namozine Creek Bridge	\$2,990,000
Total	\$6,050,000



REVENUE SHARING

- **Local Government Sponsor**
- **Funded all Revenue Sharing Project last year**
- **Sharing Cost 50/50**
- **6 Year Plan**





APPOMATTOX RIVER WATER AUTHORITY

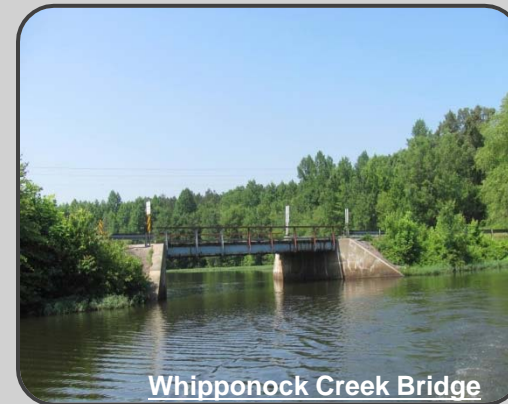
RESERVOIR BRIDGE ANALYSIS

BOARD PRESENTATION

QUESTIONS



Namozine Creek Bridge



Whipponock Creek Bridge

3040 Avemore Square Place
Charlottesville, VA 22911
Phone: 434-984-2700
Fax: 434-978-1444

September 25, 2014

www.wvassociates.net

P.O. Box 4119
Lynchburg, VA 24502
Phone: 434-316-6080
Fax: 434-316-6081